

Sleep Medicine Catalog

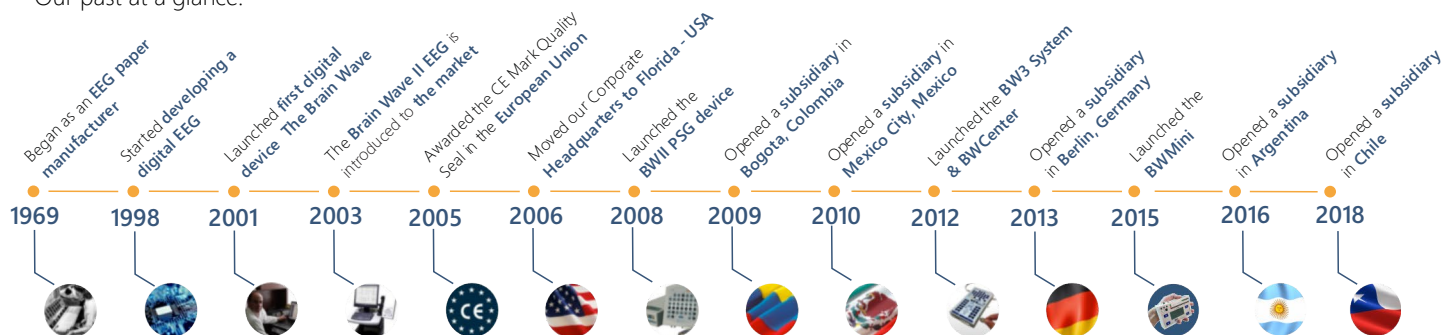


BWMini PSG

History

Since 1969, we have worked tirelessly to deliver the best available products and customer experience. Today, we specialize in offering innovative solutions for diagnostics in Neurology and Sleep Medicine. We operate on a global level in the manufacturing, marketing, and distribution of equipment and supplies, offering the best return on your capital investment, with a people-centric approach in everything we do.

Our past at a glance:



Neurovirtual Americas

Here are some important accounts that use Neurovirtual equipment in their everyday practices, helping humanize diagnostics.

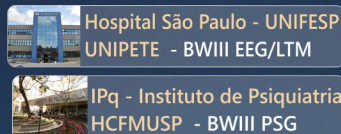
Canada



Mexico



Brazil



Chile



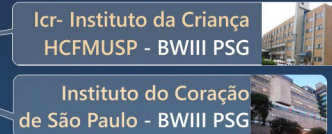
USA



Colombia



Brazil



Paraguay



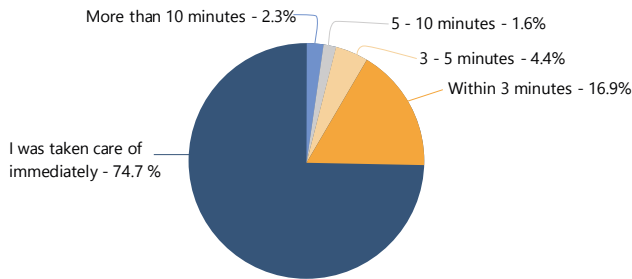
Argentina



At Neurovirtual, we provide 24/7 technical support, powered by a human being on the other side, because we understand that your time is best spent helping your patients, not waiting on a lengthy queue or dealing with a recording.

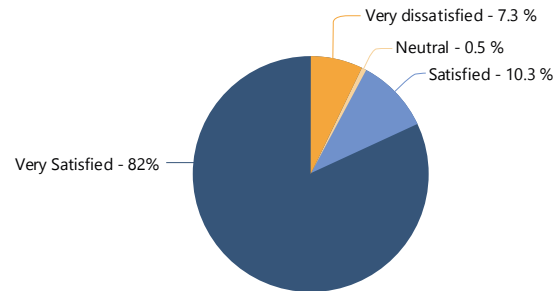
A survey conducted by a third party between January and September 2017, completed by over 400 of our current customers yielded strong evidence that we are a people-first company, as detailed in the following results: 75% of the sample customers said they were answered immediately, with 20% waiting less than 3 minutes to speak to a technical support specialist.

1.About how long did you have to wait before speaking to a representative?



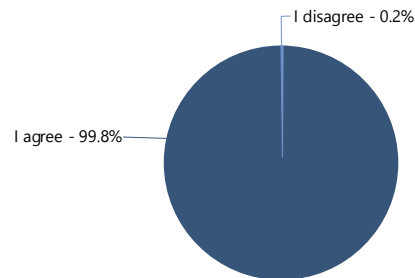
Over 90% of the customers who responded to the survey said they were satisfied, or very satisfied with their wait time.

2.How satisfied are you in the time your call was answered?



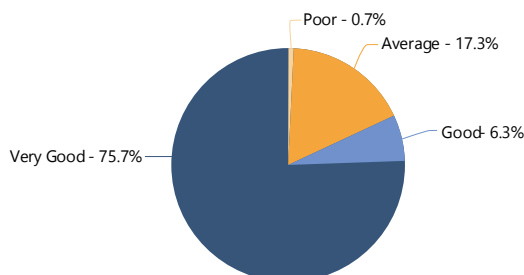
We believe that careful listening is a big part of what it takes to provide the right solution, and we train our specialists to be active and patient listeners. Over 99% of our respondent customers rated our technical support specialists as very knowledgeable, friendly, and courteous in their handling of support calls.

3.The customer service representative was very knowledgeable: Do you agree or disagree?

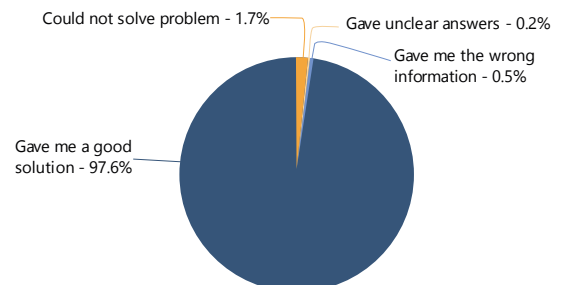


The process is important, but ultimately, the results are what matter. Over 97% of our customers felt they received a good solution, with 94% saying that our support specialists were able to provide a quick answer to the problem they were experiencing, allowing them to get back to work doing what matters most, helping their patients.

4. Overall, was the process for getting your problem resolved:



5.What would best describe what happened?

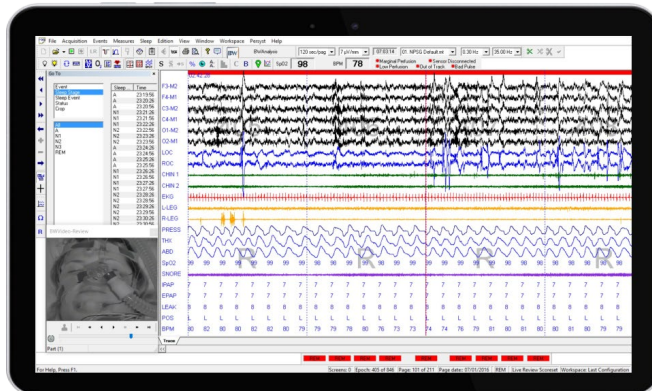


Our high-quality products offer the latest in hardware technology, paired with our proprietary BWAnalysis software, allowing for greater efficiency so you can better serve your patients.

Neurovirtual employs a dedicated team of in-house software developers and engineers, whose primary goal is to continually improve our user platform to better suit your needs. Part of our people-first approach includes 50 hours of software customization with every new order, ensuring our software suite is the most intuitive and user-friendly package available.

Intuitive and Flexible PSG software

- AASM guideline compliant PSG software
- Multiple different staging and scoring options, which provide the flexibility of staging/scoring per user preference
- Software allows user to stage via keyboard, number keys, or directly from screen menu
- Users can score sleep events via multiple different methods: click and drag, point and click, and autoscore
- Sleep events can be auto-associated per channel scored or selected on the fly via hotkeys. This is useful to expedite scoring per user preference
- Sleep statistics feature for staged and scored data during live acquisition allow users to score events during live review and confirm staging/respiratory parameters directly on screen (TST, AHI, RDI, etc.). This is useful to effectively confirm that patient meets Split-Night criteria on the fly
- Automatic sleep arousal association allows software to automatically associate arousals with sleep events meeting AASM scoring criteria
- Duo Split-Screen options allows users to stage and score sleep events in two different page speeds to expedite sleep scoring process
- Full EEG add-on capabilities for routine EEG, LTM, & ICU monitoring



Synchronized HD Video

- Dual-Video Monitoring allows user to configure two video cameras in order to be able to capture close and wide angles of patient during video-monitoring
- Post-Acquisition Zoom allows user to zoom video-picture digitally after recorded
- Live Review Video Monitoring allows user to review while recording
- HD Audio captures two-way communication between patient and technician

Windows 7 to 10 Compatible Software

- Supports Desktop, Laptop, or Tablet PC
- Easy report customization via doc template
- Unlimited Software Update and Reader Station Licenses which allow user to upgrade and install software free of charge

Fully Customizable Software

- Users can create custom sleep events and associate warning parameters per desired guidelines
- Microsoft Word Report Template generation via Microsoft Word
- Easy Score-Set option allows users to create user specific

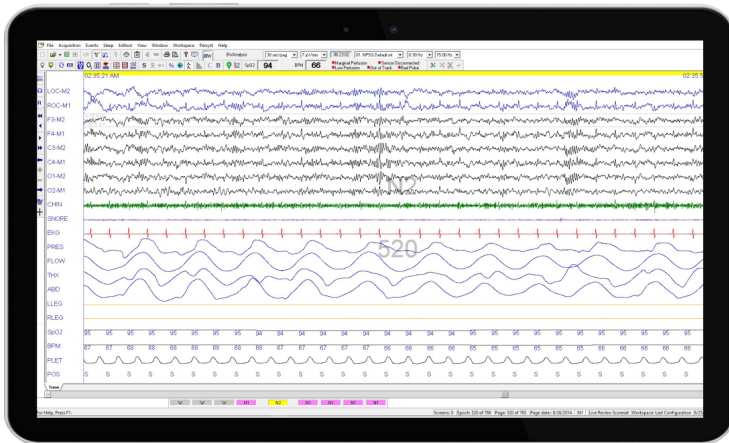
scoring sets to separate and compare scoring between multiple users

- Inter-scorer reliability is built into software and allows users to compare scored data to a golden scorer to improve their scoring ability
- Unlimited customizable PSG hypnograms allow user the flexibility to create multiple

custom graphs to accommodate all patient demographics and needs

- Custom Workspace allows user to create custom workspaces configured to meet their needs and preferences





"My Neurovirtual experience was pleasant and exceeding my expectations"

John Axley MD - Pensacola, FL

Remote Scoring/Review Access

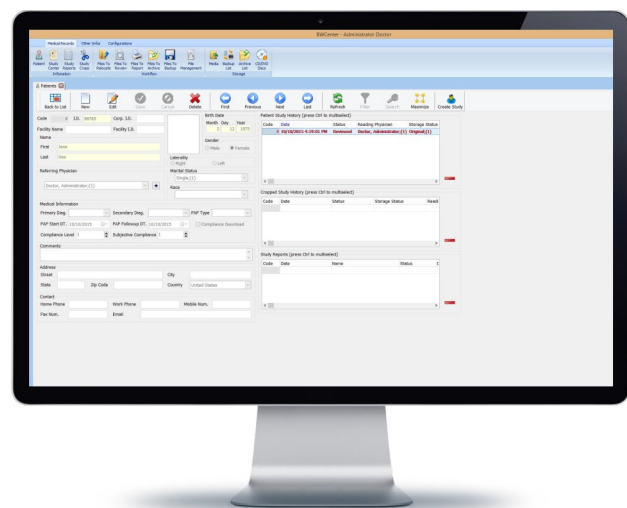
- Studies can be accessed by an authorized user from any computer or tablet to score/review the PSG data, even during the live recording.
- Software supports Windows RDP, Citrix, and many third party remote desktop applications.

BW Center

Microsoft SQL-based BWCenter patient database software delivers integrated solutions for enterprise environment, and offer seamless integration with healthcare information systems via HL7. BWCenter is a powerful tool to manage EEG studies and allows user to easily organize, find and report patient files. Filter study by date, status, diagnosis, or use any built-in customizable field to create custom filters for your unique needs. Data may be organized to reside on a server or in a peer to peer environment distributed across all recording systems.

BWCenter Patient Database Features

- Integration with Neurovirtual's BWAnalysis Acquisition/ Review Software
- Handles patient files, develops patient reports and tracks overall progress of patient care
- Ability to backup, archive, relocate, and manage patient data from an intuitive data management tool
- Expanded search capability allows user to search for patients based on a variety of filter options
- Patient homepage includes an individual's contact information and other pertinent data such as exams performed and reports generated
- Management of multiple facilities allow expanded control across multi-site centers
- Enhanced login security and permission group options allow administrators the flexibility of applying specific user account permission to different staff members
- Log all activities for security: user date/time and detail operations



BWCenter/Hospital EMR HL7 Integration Features

- HL7 Bi-Directional interface allow integration between BWcenter and Hospital EMR Platforms
- ADT Patient Demographic information and Order Messages (ORM) can be exchanged from Hospital EMR to BWcenter automatically via HL7
- Final reports in PDF can be transmitted directly from BWcenter to Hospital EMR
- Compatible with all major EMR Platforms

Our hardware is designed to be both attractive and ergonomic, with a forward-looking approach employed from conception to production. We use light-weight, durable materials, and add convenient features to our hardware that consider the comfort of the professionals and patients that will be using the devices on a daily basis.

BWIII PSG Plus

- Full Routine PSG and EEG functionally, which allow user to perform both clinical PSG and EEG from the same hardware and software platform
- Hardware is light-weight and portable and can be transported from one location to another seamlessly via carrying case or permanently installed in a sleep lab environment
- Dual electrode/sleep sensor inputs on the head box and amplifier provide sleep techs with flexibility and troubleshooting options
- Built-in bedside Impedance check directly from Amplifier allow techs to verify the impedance status without having to leave patient side
- 8 Built-in DC channels directly from the amplifier allow integration of auxiliary devices (CPAP/Capnography)
- Built-in Pressure Transducer on both head box and amplifier
- Built-in Nonin Pulse Oximeter Module



"[Neurovirtual] Is very user-friendly not only for our technicians, but also for our physicians. They are able to remotely access the reader station, to do reporting. So they can do this from their office, or a laptop from their home... If we were happen to have any issues, we call tech support and they are there for us 24/7..."

Lauren McCune, RN, BSN -Supervisor of Electrodiagnostics Services at Butler Memorial Hospital, PA



BWIII PSG

- AASM Complaint Type 1 PSG system. (AASM Staging Criteria)
- PSG specific headbox with intuitive sleep related sensor connection indicators
- Hardware is light-weight and portable. Perfect for mobile or stationary PSG solutions
- Non-proprietary connectors/cables
- Allow techs to verify the impedance status without having to leave patient's side
- 8 Built-in DC channels directly on the amplifier allow integration of auxiliary devices (CPAP/Capnography)
- Built-in Nonin Pulse Oximeter Module in the Amplifier

HST Compass

- 13 channels
- The HST Compass is a polysomnography type 3 device intended to perform HST studies. The device contains 2x AC bipolar channels, pressure transducer, integrated RIP interfaces, Oximeter, integrated body position and DC channels. All of these resources embedded into a single module that will comfortably fit on the patient chest
- Micro SD Card with capability of recording multiples studies



BWMini HST/PSG

- Amplifier Designed for Type 3 HST (27 Channels)
- Upgradable to Type 2 HST and In-lab Type 1 PSG
- Also upgradable to Ambulatory EEG
- Hardware is light weight and portable
- Perfect for HST or in-lab PSG
- LCD screen displays electronic impedance, study, and battery status
- 48 hours of recording with the same set of batteries
- Non-proprietary connectors/cables
- BWAnalysis Software suite
- Synchronized high-quality video (optional)
- 3 Built-in DC channels directly on the amplifier allow integration of auxiliary devices (CPAP/Capnography)
- Built-in Nonin xPod Pulse Oximeter Module



Amplifiers Specifications

Specifications	BWIII PSG Plus	BWIII PSG	BWMini PSG	HST Compass
Studies Performed	PSG Type I and EEG (Full 10/20)	PSG Type I	PSG Type II and I	HST, PSG Type III
Total Channels	50 Channels	37 Channels	42 Channels	13 Channels
DC Channels	08 DCX	08 DCX	03 DCX	03 DCX
Communication	Ethernet	Ethernet	USB	Micro USB
Photic Stimulator	Programmable 0Hz to 60Hz	0Hz to 60Hz	N/A	N/A
Impedance Check	Amplifier and Software	Amplifier and Software	Software	N/A
Low Filters	0.01Hz to 15Hz	0.01Hz to 15Hz	0.01Hz to 15Hz	0.01Hz to 15Hz
High Filters	1Hz to 100Hz	1Hz to 100Hz	1Hz to 100Hz	1Hz to 100Hz
A/D Resolution	16 Bits	16 Bits	16 Bits	16 Bits
Sampling Rate	2000 Hz	2000 Hz	2000 Hz	2000 Hz
Storage Rate	500Hz	500Hz	300Hz	300Hz
Pressure Transducer	Two Integrated (Headbox and Amplifier)	Two Integrated (Headbox and Amplifier)	Integrated	Integrated
Oximeter Nonin	Integrated	Integrated	Module xPod	Module xPod

Accessories & Supplies

Snore Sensor



ThermoCouple Flow Sensor



MaxxiRip



Ten20 Conductive Paste



Electrodes MaxxiGold



MaxxiPosition



For more information about products and supplies please consult your local distributor or call your nearest local office.



Neurovirtual Corporation

3303 W Commercial Blvd.
Fort Lauderdale, FL 33309 / USA
Toll Free: 1-888-6 - SLEEP- 8
Phone: +1 (786) 693-8200
Technical Support: +1 (877) NEURO-40
info@neurovirtual.com
www.neurovirtual.com

Neurovirtual Brazil

Al Araguaia, 271, Alphaville
Barueri - CEP 06455-000 / São Paulo
Phone: +55 (11) 2179-9700
Technical Support: +55 (11) 4040-4511
brasil@neurovirtual.com
www.neurovirtual.com.br

Neurovirtual Colombia

Calle 79 No. 16ª-20 Oficina 608
Edificio Office Class / Bogotá
Phone: +57 6009801 option 1
Technical Support: +57 6009801 option 2
colombia@neurovirtual.com
www.neurovirtual.com.co

Neurovirtual Mexico

Av. Melchor Ocampo, 463
Colonia Nueva Anzures - Delegación Miguel Hidalgo México CDMX- CP 11590
Phone: +52 (55) 85259474 option 1
Technical Support: +52 (55) 85259474 option 2
mexico@neurovirtual.com.mx
www.neurovirtual.com.mx

Neurovirtual Argentina

Gallo 1224 PBC, Recoleta - CP 1425 / Buenos Aires
Phone: 0800-333-0410 option 1
Technical Support: 0800-333-0410 option 2
argentina@neurovirtual.com
www.neurovirtual.com.ar

Neurovirtual Chile

Av. Providencia Nro. 2330
Comuna Providencia / Santiago de Chile
Phone: +56 44890-5225 option 1
Technical Support: +56 44890-5225 option 1
chile@neurovirtual.com
www.neurovirtual.cl