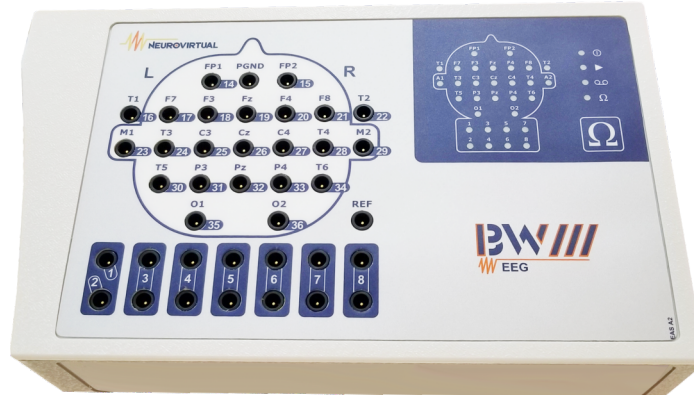




1. Product Specification BWIII EEG



BWIII EEG Amplifier Module

Channels					
#	Channel Name	#	Channel Name	#	Channel Name
1	FP1 (EEG System 10-20)	13	CZ (EEG System 10-20)	25	Monopolar Auxiliary
2	FP2 (EEG System 10-20)	14	C4 (EEG System 10-20)	26	Monopolar Auxiliary
3	T1 (EEG System 10-20)	15	T4 (EEG System 10-20)	27	Bipolar Auxiliary
4	F7 (EEG System 10-20)	16	A2 (EEG System 10-20)	28	Bipolar Auxiliary
5	F3 (EEG System 10-20)	17	T5 (EEG System 10-20)	29	Bipolar Auxiliary
6	FZ (EEG System 10-20)	18	P3 (EEG System 10-20)	30	Bipolar Auxiliary
7	F4 (EEG System 10-20)	19	PZ (EEG System 10-20)	31	Bipolar Auxiliary
8	F8 (EEG System 10-20)	20	P4 (EEG System 10-20)	32	Bipolar Auxiliary
9	T2 (EEG System 10-20)	21	T6 (EEG System 10-20)	33	DC Channel - 1
10	A1 (EEG System 10-20)	22	O1 (EEG System 10-20)	34	DC Channel - 2
11	T3 (EEG System 10-20)	23	O2 (EEG System 10-20)	35	DC Channel - 3
12	C3 (EEG System 10-20)	24	FLASH STIMULATOR	36	DC Channel - 4

2. System Specifications BWIII

2.1 Product Specification BWIII

Low Frequency Filter	Adjustable by software on-line and off-line: 0.01 to 100Hz
High Frequency Filter	
Notch Filter	50 or 60 Hz
Sensitivity Range	1 μ V/mm - 500 μ V/mm
Software	BWAnalysis - Windows® 7, 8 or 10
Length	5.7in - 14,48cm
Width	10.7in - 27,18cm
Height	2.2in - 5,59 cm

2.2 Analog/Digital Converter Characteristics

Characteristics	Values
Resolution	16 bits
Conversion time	15 μ s
Data flux:	Microprocessor
Sample rate	Up to 2048 Hz
Storage Rate	Up to 512 Hz
Deblock	YES

2.3 Amplifier Input Characteristics

Characteristics	Values
Frequency response	0,01 to 100Hz
AC channels Input Range	2 mVpp
DC channels Input Range	-5Vdc - +5Vdc
AC Channels connector type	Touch Proof 1.5mm
DC Channels connector type	P2 - 3.5mm
Transducer pressure connector type	Luer Lock
Signal Noise	< 1 μ V RMS.
Input Impedance	> 100 M Ω
Calibration Signal	0,5Hz, 50 μ V Square Wave
CMRR	> 80 DB

2.4 Power Supply Characteristics

Characteristics	Values
Input Voltage (AC)	100VAC \circ 240VAC +/- 10%
Frequency	45 - 75 Hz
Consumption	0,23 A @ 120 VAC 0,16 A @ 230 VAC
Output Voltage (DC)	+5VDC
Ripple Vpp Max	50mV
Certification	Approved by CSA, EN, IEC Standards
Isolation	Double and reinforced (IEC 60601-1, BF type)
Classification	Class II